

# STUDIO // HUMBUG





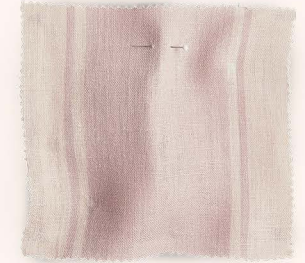
# STATEMENT STRIPE



**MULBERRY**



**CARDINAL**



**ROSE**



**FERN**



**CELADON**



**PACIFIC**

FABRIC: VISCOSE/LINEN, 136CM USABLE WIDTH, 22CM REPEAT, LEAD 14 DAYS

# MODERN TICKING



RASPBERRY



CELADON



SAFFRON



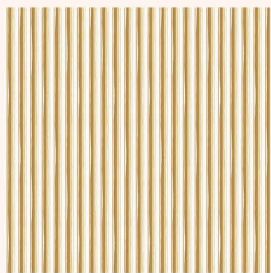
PINE NEEDLE



CLARET



SEAFOAM



OCHRE



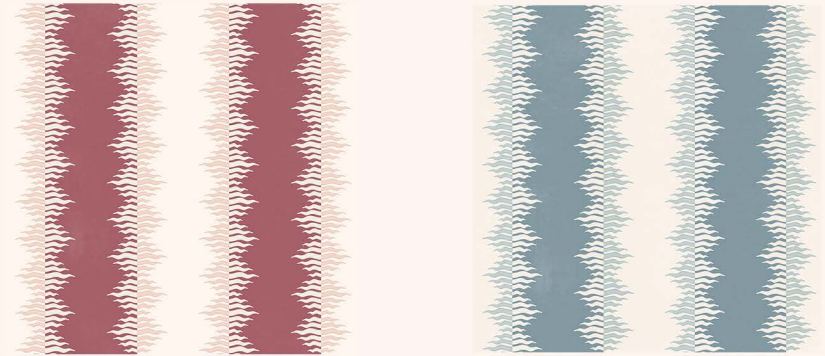
SEAFOAM

FABRIC: VISCOSE/LINEN, 136CM USABLE WIDTH, 2CM REPEAT, LEAD 14 DAYS  
WALLPAPER: NON-WOVEN TEXTURED PAPER, 52CM X 10M ROLL, 2CM REPEAT, LEAD 3 WEEKS



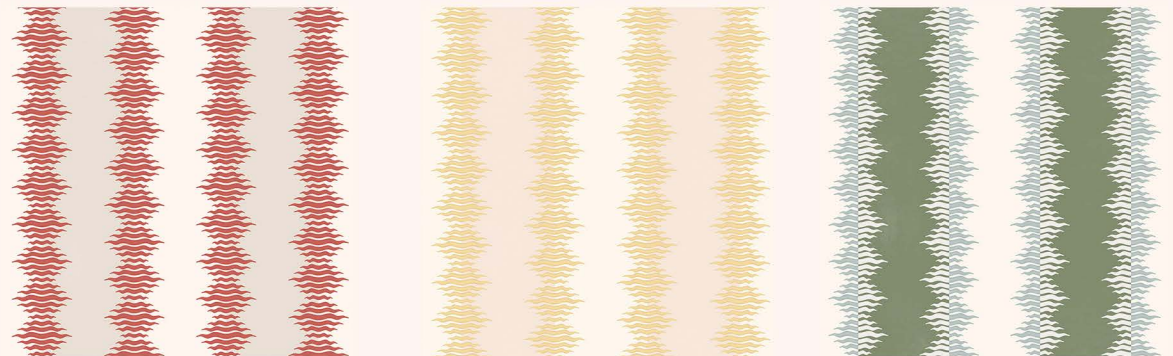


## CRIMPED STRIPE



CLARET

STONE BLUE



MUSHROOM

BLUSH

OLIVE

WALLPAPER: NON-WOVEN TEXTURED PAPER, 52CM X 10M ROLL, 5CM REPEAT, LEAD 3 WEEKS

# NEW STRIPE



**DUCK EGG**



**INDIGO**



**OLIVE**



**RHUBARB**



**CHOCOLATE**



**MOSS**



**CHERRY**

FABRIC: VISCOSE/LINEN, 136CM USABLE WIDTH, 6.5CM REPEAT, LEAD 14 DAYS





## HORTICULTURE



MOSS



INDIGO

## XL NEW STRIPE



MOSS



CHOCOLATE



CHERRY

FABRIC: VISCOSE/LINEN, 136CM USABLE WIDTH, 10CM REPEAT, LEAD 14 DAYS  
WALLPAPER: NON-WOVEN TEXTURED PAPER, 52CM X 10M ROLL, 50CM REPEAT, LEAD 3 WEEKS

# PYJAMA



AMBER



OLIVE

# HARLEQUIN

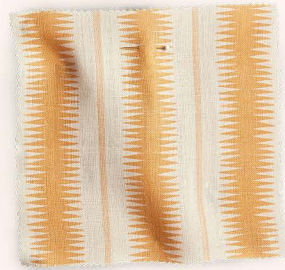


FABRIC: VIS/LINEN, 136CM USABLE WIDTH, PYJAMA 5CM REPEAT, HARLEQUIN 45X25CM , LEAD 14 DAYS





# SQUIGGLE



**AMBER**



**BLUSH**



**RHUBARB**



**PICKLE**



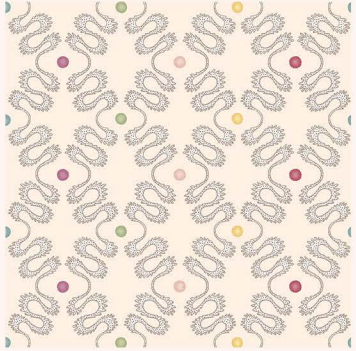
**PACIFIC**



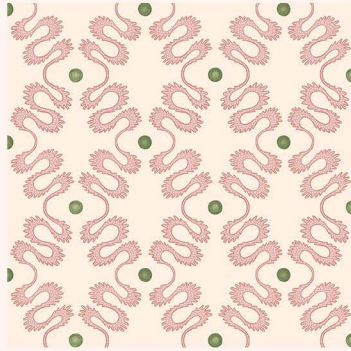
**ESPRESSO**

FABRIC: 100% LINEN, 136CM USABLE WIDTH, SQUIGGLE 8CM REPEAT, LEAD 14 DAYS

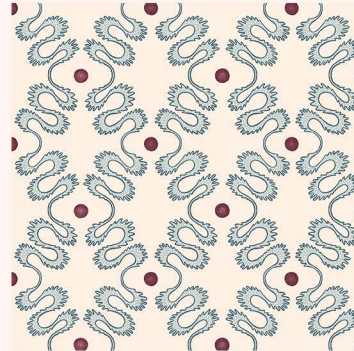
# PATTERN PLAY



CANDY



FIG



INDIGO



FOOL



OLIVE



FIG



INDIGO



CANDY



FABRIC: VIS/LIN OR 100% LINEN, 136CM USABLE WIDTH, 22.5CM REPEAT, LEAD 14 DAYS  
WALLPAPER: NON-WOVEN TEXTURED PAPER, 52CM X 10M ROLL, 26CM REPEAT, LEAD 3 WEEKS  
(CANDY COLOURWAY HAS SAME VERTICAL REPEAT, BUT HORIZONTAL X3)



## CANOPY



INDIGO



FOREST



PEAT



JUNIPER

FABRIC: 100% LINEN, 136CM USABLE WIDTH, 28X60CM REPEAT, LEAD 14 DAYS  
WALLPAPER: NON-WOVEN TEXTURED PAPER, 52CM X 10M ROLL, 67CM REPEAT, LEAD 3 WEEKS

# SWEETEST PEA



INDIGO



OLIVE



MOCHA



INDIGO



OLIVE



MOCHA

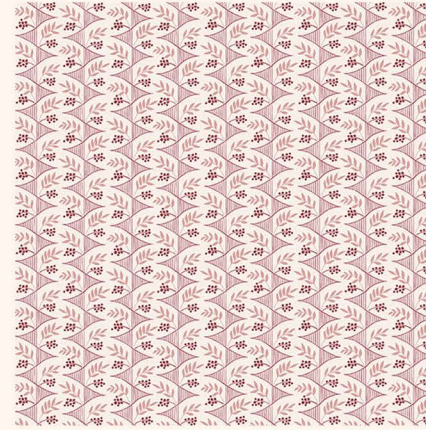
FABRIC: LINEN, 136CM USABLE WIDTH, 25CM REPEAT, LEAD 14 DAYS

WALLPAPER: NON-WOVEN TEXTURED PAPER, 52CM X 10M ROLL, 25CM REPEAT, LEAD 3 WEEKS

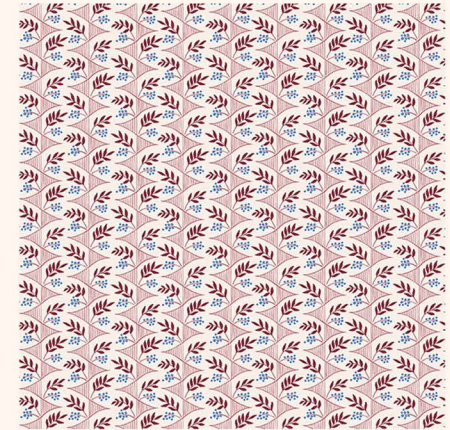




# CHICANE



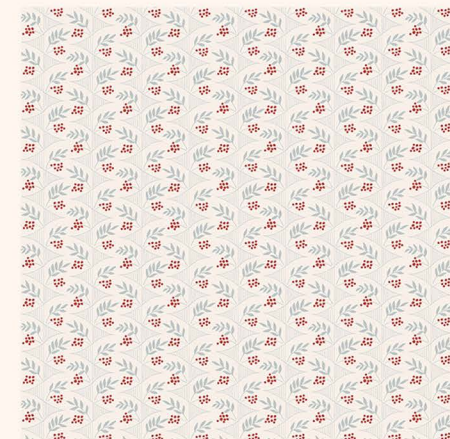
**RHUBARB FOOL**



**BERRY**



**TRUFFLE**



**SKY**

WALLPAPER: NON-WOVEN TEXTURED PAPER, 52CM X 10M ROLL, 5.5CM REPEAT, LEAD 3 WEEKS

# QUERCUS



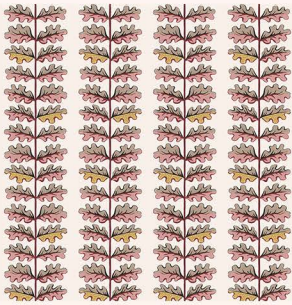
**RHUBARB**



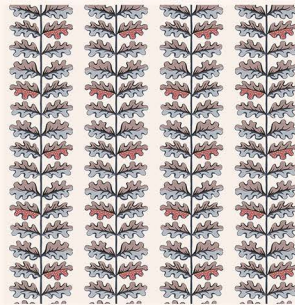
**CHAMBRAY**



**SAGE**



**RHUBARB**



**CHAMBRAY**



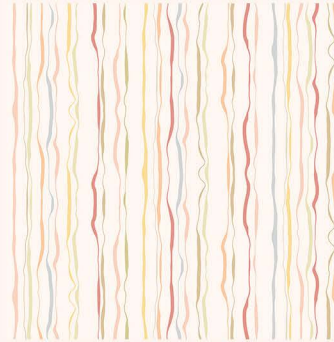
**SAGE**

FABRIC: VISCOSE/LINEN, 136CM USABLE WIDTH, 26CM REPEAT, LEAD 14 DAYS  
WALLPAPER: NON-WOVEN TEXTURED PAPER, 52CM X 10M ROLL, 26CM REPEAT, LEAD 3 WEEKS





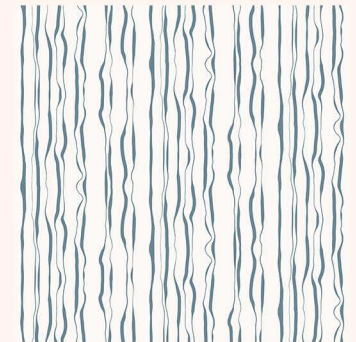
# INDIAN INK



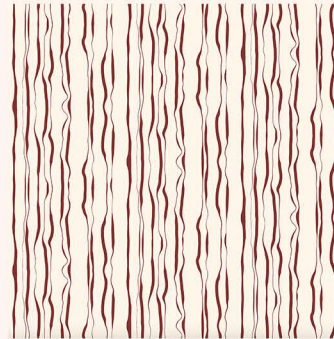
**CANDY**



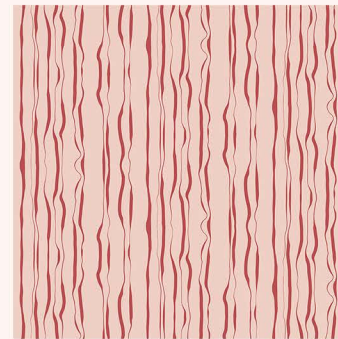
**MOSS**



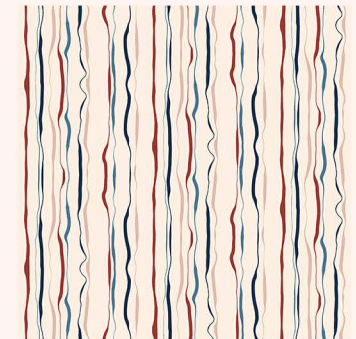
**STONE BLUE**



**OXBLOOD**



**PEONY**



**BERRY**



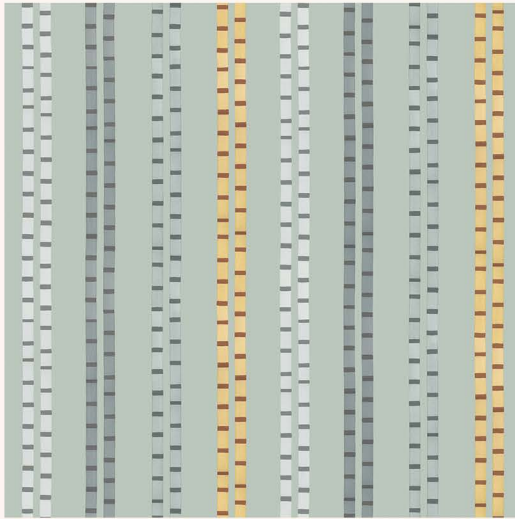
**OLIVE**



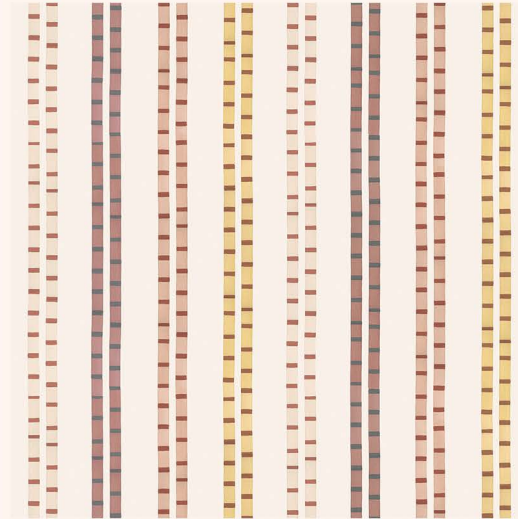
**DENIM**

FABRIC: VISCOSE/LINEN, 136CM USABLE WIDTH, V 8CM REPEAT, LEAD 14 DAYS  
WALLPAPER: NON-WOVEN TEXTURED PAPER, 52CM X 10M ROLL, 25CM REPEAT, LEAD 3 WEEKS

# BAMBOO



DUCK EGG



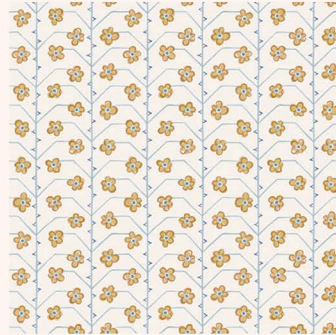
SORBET

WALLPAPER: NON-WOVEN TEXTURED PAPER, 52CM X 10M ROLL, 25CM REPEAT, LEAD 3 WEEKS

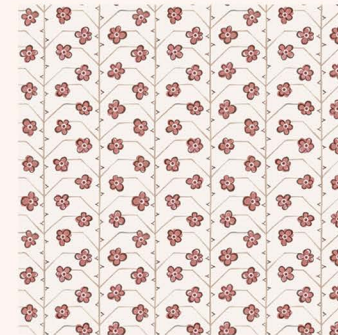




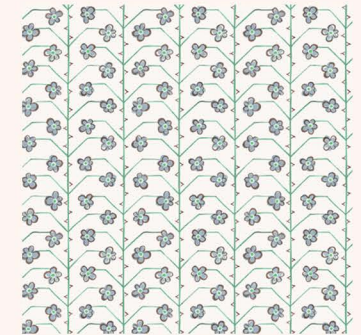
# DINKY



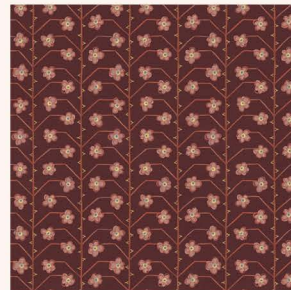
OCHRE



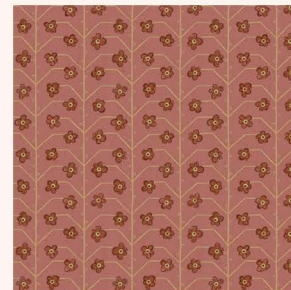
APPLE RED



CORNFLOWER



PLUM



BRICK



BUTTERSCOTCH



GUACAMOLE

WALLPAPER: NON-WOVEN TEXTURED PAPER, 52CM X 10M ROLL, 50CM REPEAT, LEAD 3 WEEKS

# CHEVRON STRIPE



INDIGO



MULBERRY



PEAT



PICKLE



SPICE

FABRIC: 100% HEAVY NATURAL LINEN, 140CM WIDTH, 20 X 30CM REPEAT, LEAD 14 DAYS



# PELARGONIUM



**GARNET**



**WASABI**



**MALACHITE**



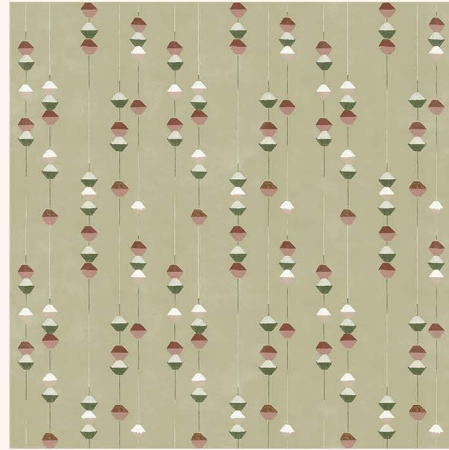
**LAPIS**

WALLPAPER: NON-WOVEN TEXTURED PAPER, 52CM X 10M ROLL, 64CM REPEAT, LEAD 3 WEEKS

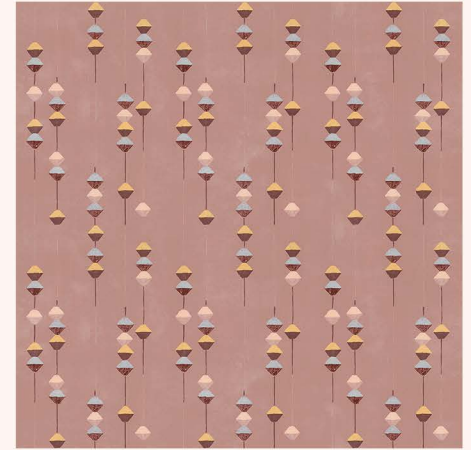




# ABACUS



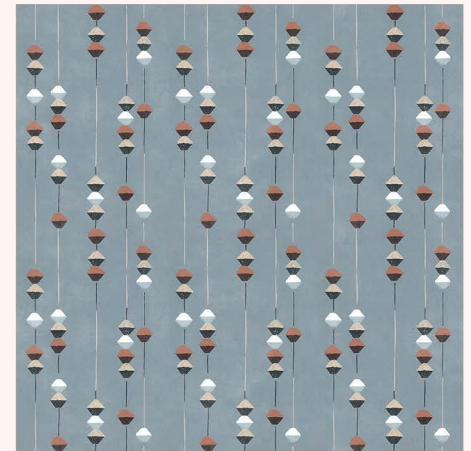
WASABI



CLAY



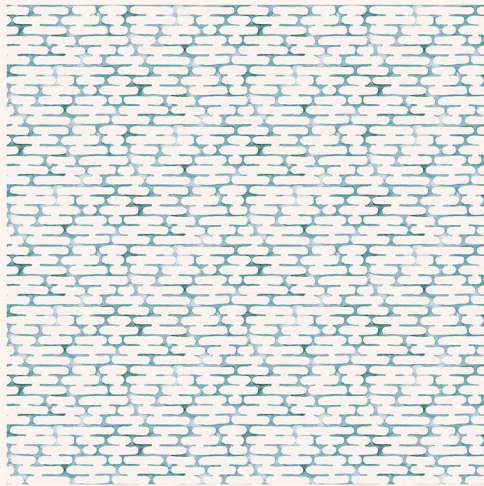
TOFU



HARBOUR

WALLPAPER: NON-WOVEN TEXTURED PAPER, 52CM X 10M ROLL, 26CM REPEAT, LEAD 3 WEEKS

# KYOTO



INK



WALLPAPER: NON-WOVEN TEXTURED PAPER, 52CM X 10M ROLL, 13CM REPEAT, LEAD 3 WEEKS