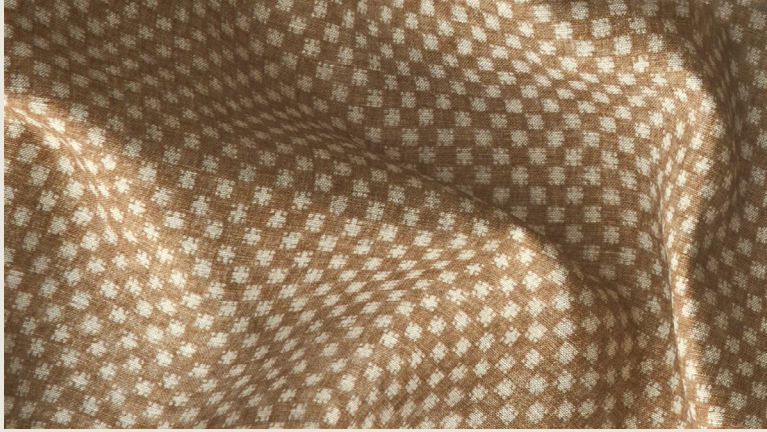




STUDIO
SUPPLE

2025
TEXTILE CATALOGUE



Naka

Moss
Aged Juniper
Old Rose
Turmeric Root
Sumac
Cocoa



Ramie

Indigo & Nutmeg
Moss & Nutmeg
Rose & Almond
Cocoa & Plum
Chamomile & Sumac



Katagome

Rosemary & Walnut
Borage & Rose
Cinnamon & Cocoa

Our first textile collection was born from a true passion and love for textiles, colour and nature. Inspired by a trip to Japan exploring its rich cultural heritage, the collection shows an appreciation for the regions autumnal colour palette, and historic use of indigo.

In the studio, patterns begin by hand and evolve through watercolour studies and stencilling. Far removed from their inspirations, each print is reminiscent of its original structure but carefully resurrected. Old patterns recede, and new perspectives are created to make a unique artisanal print.

The collection is digitally printed in Lancashire and we launched new colourways in July 2025.



NAKA			
Inspired by an antique cotton fragment we designed a smaller repeat patterned fabric. Originally part of Japanese Indigo workwear, the earthy colourways of this print reflect its Japanese heritage. The faded nature of the print is symbolic of the water-coloured medium it was designed and resonate with its narrative.			
MOSS		AGED JUNIPER	
	<div>CodeNR0200</div> <div>Width137cm</div> <div>Printed Width138cm</div> <div>Pattern Repeatw196mm x h227mm square</div> <div>ApplicationDrape only/ Light domestic upholstery</div> <div>Composition100 % Linen</div> <div>Price (Ex VAT)£130.20</div>		<div>CodeNR0300</div> <div>Width137cm</div> <div>Printed Width138cm</div> <div>Pattern Repeatw196mm x h227mm square</div> <div>ApplicationDrape only/ Light domestic upholstery</div> <div>Composition100 % Linen</div> <div>Price (Ex VAT)£130.20</div>
OLD ROSE		TURMERIC ROOT	
	<div>CodeNR0400</div> <div>Width137cm</div> <div>Printed Width138cm</div> <div>Pattern Repeatw196mm x h227mm square</div> <div>ApplicationDrape only/ Light domestic upholstery</div> <div>Composition100 % Linen</div> <div>Price (Ex VAT)£130.20</div>		<div>CodeNR0500</div> <div>Width137cm</div> <div>Printed Width138cm</div> <div>Pattern Repeatw196mm x h227mm square</div> <div>ApplicationDrape only/ Light domestic upholstery</div> <div>Composition100 % Linen</div> <div>Price (Ex VAT)£130.20</div>
SUMAC		COCOA	
	<div>CodeNR0600</div> <div>Width137cm</div> <div>Printed Width138cm</div> <div>Pattern Repeatw196mm x h227mm square</div> <div>ApplicationDrape only/ Light domestic upholstery</div> <div>Composition100 % Linen</div> <div>Price (Ex VAT)£130.20</div>		<div>CodeNR0700</div> <div>Width137cm</div> <div>Printed Width138cm</div> <div>Pattern Repeatw196mm x h227mm square</div> <div>ApplicationDrape only/ Light domestic upholstery</div> <div>Composition100 % Linen</div> <div>Price (Ex VAT)£130.20</div>



RAMIE			
Inspired by varying woven stripes we created a beautifully proportioned linear print. Playing with colour combinations, we experimented with natural dyes to create an earthy and organic colour palette.			
INDIGO & NUTMEG		MOSS & NUTMEG	
	<div>CodeRINo12o</div> <div>Width137cm</div> <div>Printed Width138cm</div> <div>Pattern Repeatw343mm x h594mm</div> <div>ApplicationGeneral domestic UK standard</div> <div>Composition100 % Linen</div> <div>Price (Ex VAT)£14o.4o</div>		<div>CodeRINo25o</div> <div>Width137cm</div> <div>Printed Width138cm</div> <div>Pattern Repeatw343mm x h594mm</div> <div>ApplicationGeneral domestic UK standard</div> <div>Composition100 % Linen</div> <div>Price (Ex VAT)£14o.4o</div>
ROSE & ALMOND		COCOA & PLUM	
	<div>CodeRINo35o</div> <div>Width137cm</div> <div>Printed Width138cm</div> <div>Pattern Repeatw343mm x h594mm</div> <div>ApplicationGeneral domestic UK standard</div> <div>Composition100 % Linen</div> <div>Price (Ex VAT)£14o.4o</div>		<div>CodeRINo45o</div> <div>Width137cm</div> <div>Printed Width138cm</div> <div>Pattern Repeatw343mm x h594mm</div> <div>ApplicationGeneral domestic UK standard</div> <div>Composition100 % Linen</div> <div>Price (Ex VAT)£14o.4o</div>
CHAMOMILE & SUMAC			
	<div>CodeRINo55o</div> <div>Width137cm</div> <div>Printed Width138cm</div> <div>Pattern Repeatw343mm x h594mm</div> <div>ApplicationGeneral domestic UK standard</div> <div>Composition100 % Linen</div> <div>Price (Ex VAT)£14o.4o</div>		



KATAGOME			
<p>Inspired by an antique textile found in Kyoto, we re-designed this print into a working repeat pattern.</p> <p>An incredibly unusual artefact, the original design was of Indian heritage but stencil dyed in Kyoto in the 1800s.</p> <p>The three different colourways are inspired by Japan's earthy autumnal palette.</p>			
ROSEMARY & WALNUT		CINNAMON & COCOA	
	Code	KRN005	
	Width	137 cm	
	Printed Width	138 cm	
	Pattern Repeat	w 343 mm x h 318 mm	
	Application	General domestic UK standard	
	Composition	100 % Linen	
	Price (Ex VAT)	£140.40	
BORAGE & ROSE			
	Code	KRN008	
	Width	137 cm	
	Printed Width	138 cm	
	Pattern Repeat	w 343 mm x h 318 mm	
	Application	General domestic UK standard	
	Composition	100 % Linen	
	Price (Ex VAT)	£140.40	



Under Scarlett's leadership, the studio is supported by a multidisciplinary team with expertise across interior design, sourcing, and product design. With over a decade of industry experience and a deep-rooted passion for interiors, Scarlett began her career as Lead Designer at Soho House. Her first project was the acclaimed Soho Farmhouse, followed by key roles in the design of Soho House West Hollywood, Canouan, Mykonos, and Paris.

In her final three years with Soho House, she led the design of Soho House Mumbai, spending extensive time in India, collaborating with local craftsmen, and developing bespoke block prints in Jaipur. These experiences shaped her signature approach to creating timeless, considered spaces.

ABOUT STUDIO SUPPLE

Scarlett's brother, Archie Supple, brings a diverse and complementary skill set to the studio. He oversees interior design with a passion for architectural elements, while having a honed eye for sourcing antiques and unique pieces. Scarlett and Archie, together with their dedicated team, have cultivated a studio known for its collaborative ethos, client-focused mindset, and meticulous attention to detail.



The studio has also launched a growing textile collection, reflecting its commitment to craftsmanship and detail.

With bases in London and Wiltshire, the studio's portfolio includes the restoration of a Hebridean island, elegant London townhouses, and a range of distinctive commercial spaces.

TEXTILE CATALOGUE

For more information about the textiles and work
of Studio Supple please get in touch.

Textiles@studiosupple.com
+44 (0)78 3124 2532
Ground Floor, Preachers Court
Charterhouse Square
London
EC1M 6AU

